

DTAS 2017 CONFERENCE
NML: Current and future systems –
observations for the haulier

Ben Bartlett, Tony Craven



Contents

- 1. The business**
- 2. Systems and processes**
- 3. Did you know?**
- 4. Future prospects: System integration**
- 5. NMR sample collection**





The business



- 1. Part of NMR Group plc**
- 2. Two UKAS accredited laboratories**
- 3. Payment testing for all dairy processors**
- 4. 7 day a week operations**
- 5. National sample collection network**
- 6. Testing at night**
- 7. 100,000 bulk milk tests/month and 600,000 cow sample tests/month**



National Milk Laboratories: Four Ashes



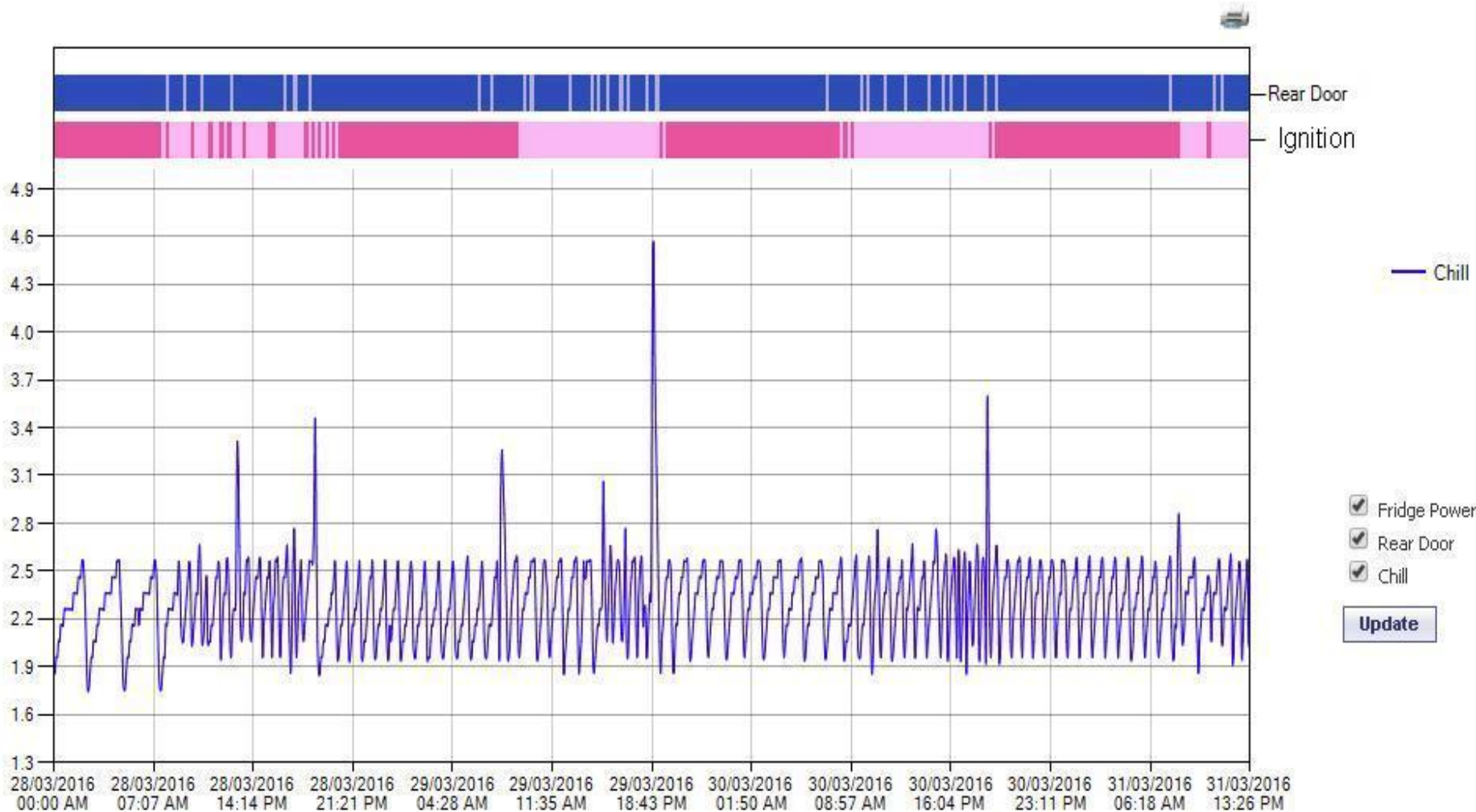
NMR Van fleet- 19 vans 15 daily routes 1.85 million miles per year



Temperature monitoring/ vehicle tracking system

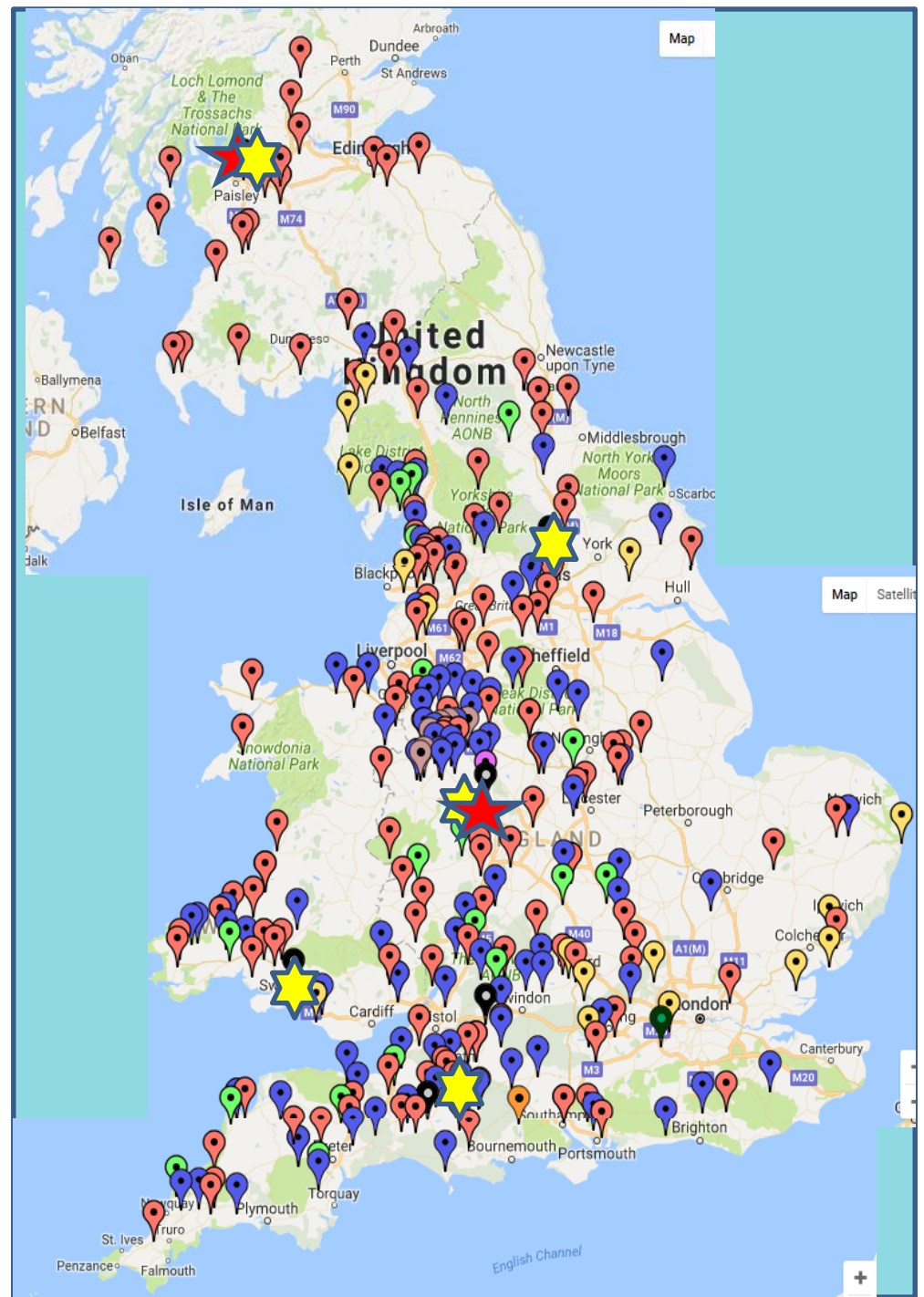


Temperature Data





- Labs in Glasgow and Four Ashes
- 7 days a week operation
- Ambient and refrigerated sample collection
- Red pins – NML, Blue pins NMR
- Temperature monitoring through SevenEye



NML Four Ashes



Milk samples heated in waterbaths prior to testing



Testing through midInfraRed



Sample agitation and extraction on mlR instrument



Tecan robot assigning milk to antibiotic test plates



Sample storage



Warranty bags

- Designed for samples that are not destined for standard registration process
- Single use with capacity to take white plastic rack
- Bags supplied on request by NML (delivered by NML van)
- NML provides warranty submission form
- Use of warranty case number



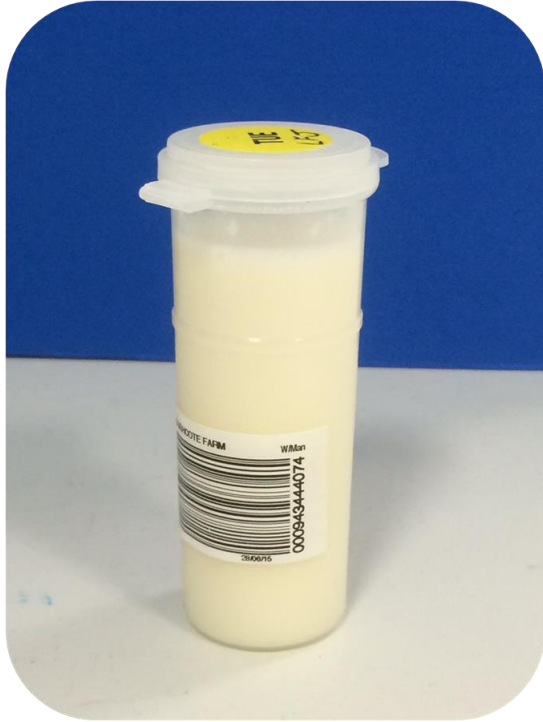
Q1: The NML driver will pick up samples if....



1. Samples are left on the correct shelf in the fridge
2. Samples are in the fridge in a white plastic rack
3. A message is left with the samples requesting collection



Q2: Sample identification: which one is correct?



1



2



3



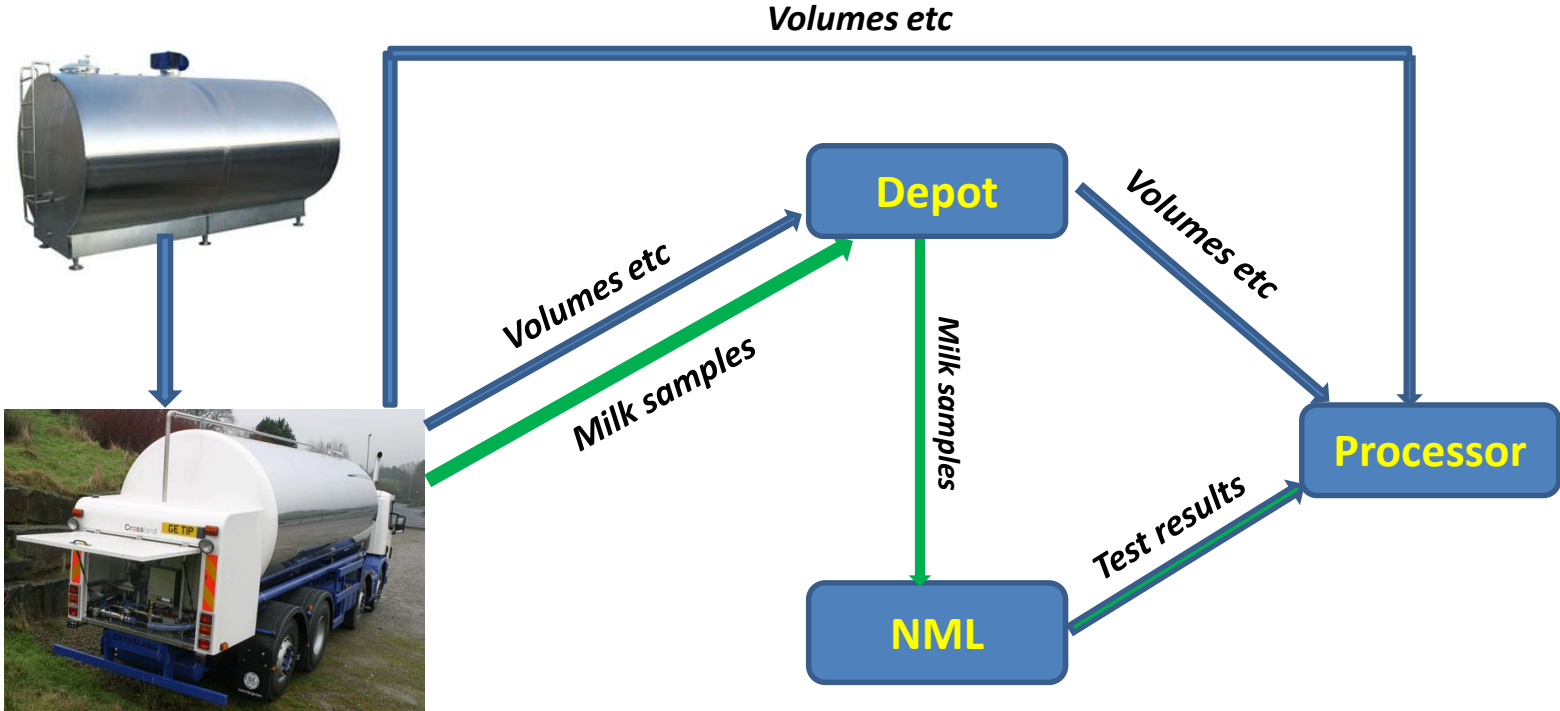
Q3: Day labels and overnight collections: the day label should relate to



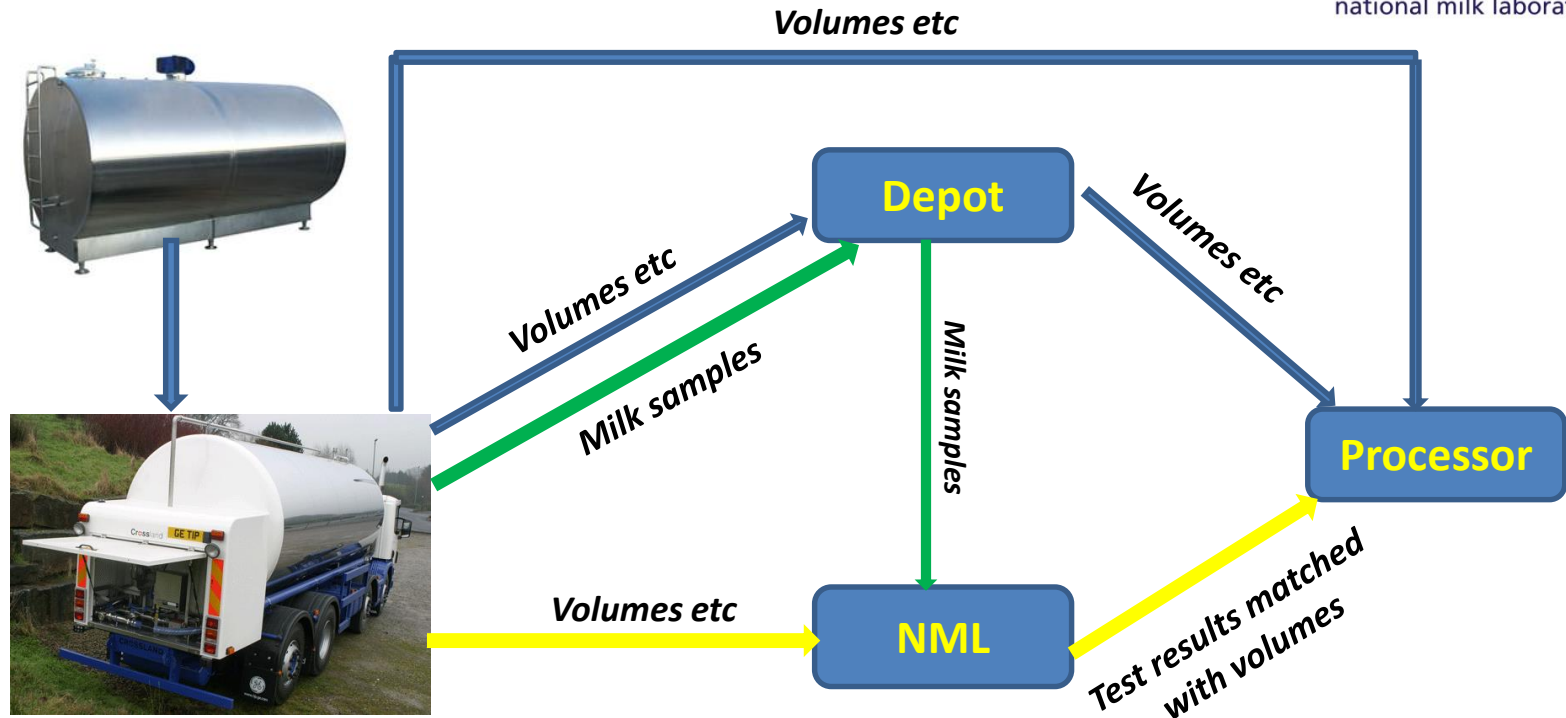
1. The day on which the tanker left the depot
2. The day on which the tanker commenced collection of milk on farm
3. The day on which the tanker completed the route and reached the depot



Outlook



Outlook



- For Haulier: No litres on multivats needed
- For Processor: No matching for processor
- Compatibility: Any system that uses the Gardner Denver Optiload system

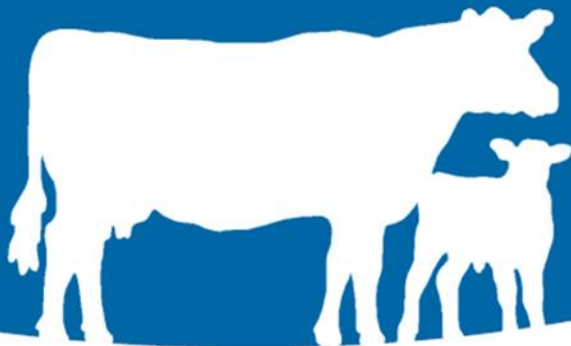
Final comments



- Aspiration for unique depot codes
- Visitors to NML always welcome
 - Value in understanding antibiotic testing methods
 - Meeting room available FOC (subject to availability)
- Please collect your kit from the NML stand before you go!

Benb@nmr.co.uk





2017 DTAS Conference

Collection and Transportation of NMR Sample boxes



NMR – individual cow samples

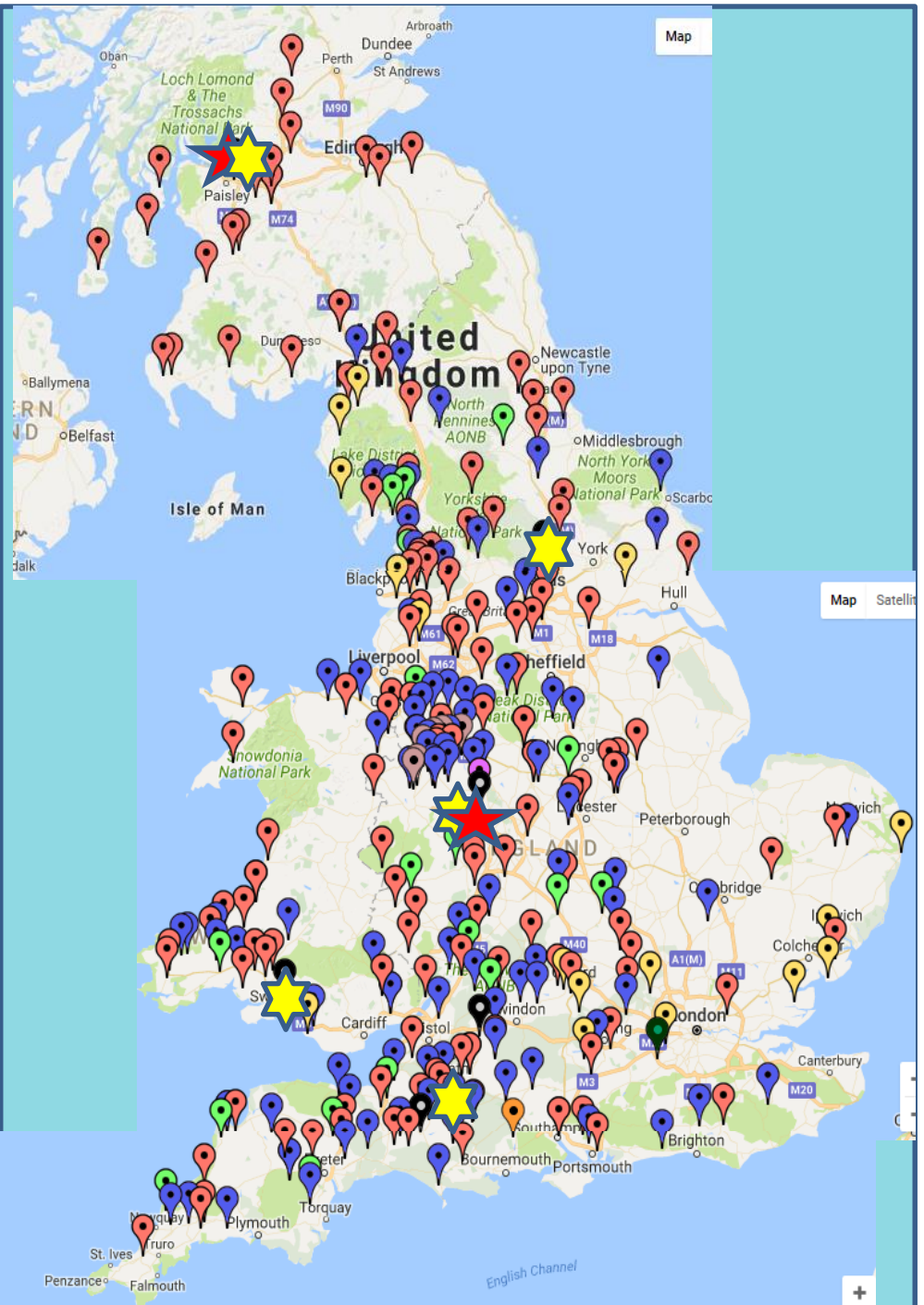


NMR Van fleet- 19 vans 15 daily routes 1.85 million miles per year





- Red pins – NML, Blue pins NMR
- Some collections daily, some weekly and some monthly
- 7.30pm transfer from Yeovil to Four Ashes



Collection of payment samples for milk buyers



Collection of NMR Samples



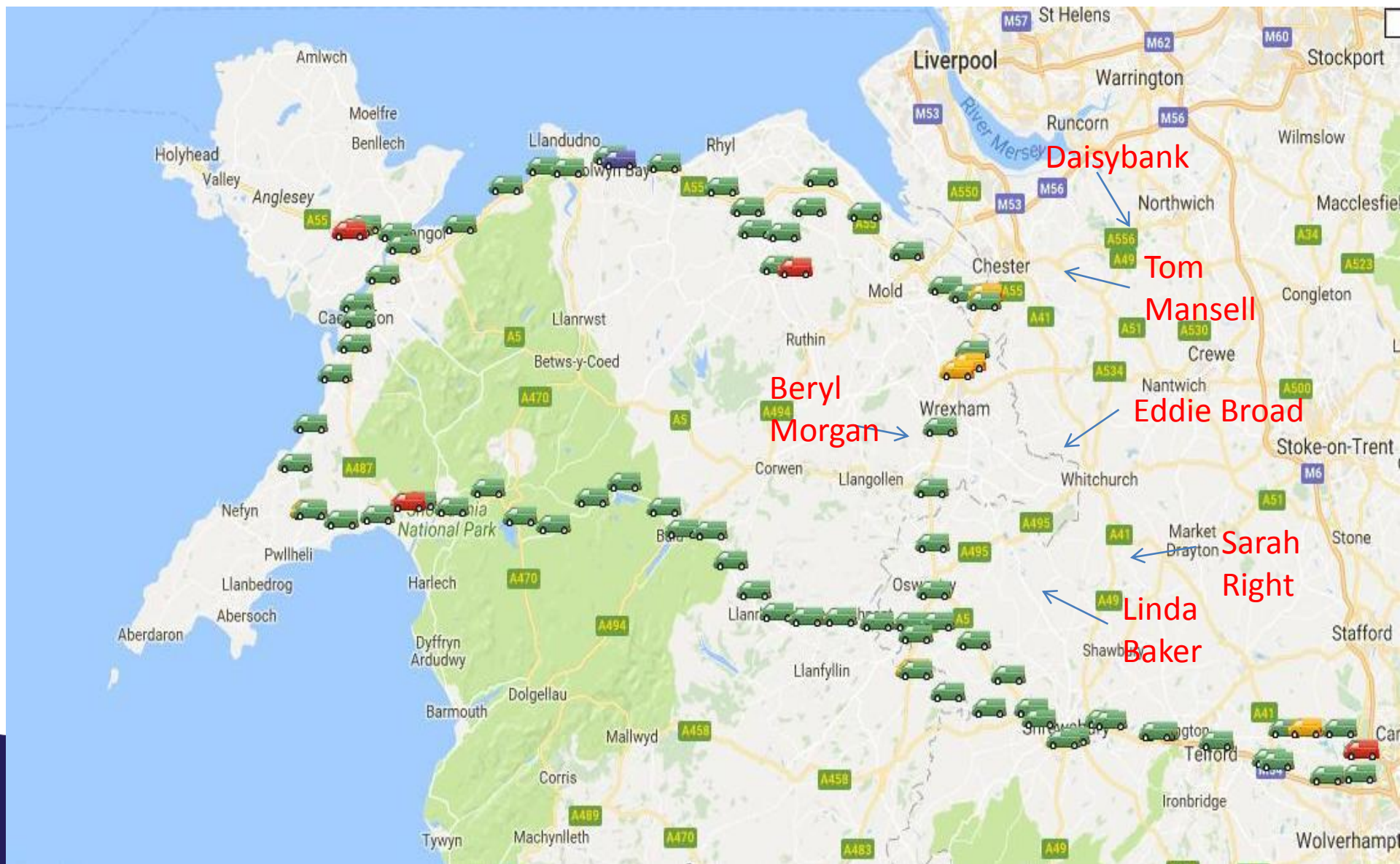
NMR Box Collection Issues- lack of space



North Wales Route- 9 hours



North Wales route- 6 additional calls 50 additional miles, 2 additional hours



NMR and Payment Sample Transport



- NMR understand space is limited and health and safety concerns regarding use of cab
- Perception that NMR Box collection is a free transportation service provided by hauliers.
- NMR sample collection is recognised in payment testing charges to processors
- Hauliers refusing to collect NMR samples from farm add costs to sample transportation and adds to carbon footprint
- Dual pricing to milk buyers under consideration



NMR sample collection solution

- Worked with Sayers Road Tankers Ltd and T P Niven Ltd
- Tanker toolbox from Jonesco (www.jonesco-plastics.com)
- Various sizes of toolbox- example in foyer
- Cost- circa £150 + £60 for brackets +fitting (Sayers happy to liaise with Haulier site managers to identify appropriate brackets)



Example box



Example box in situ



Alternative box orientation



Possible location on tanker



Possible location on tanker



In Conclusion

- Milk Recording helps farmers manage their cows and produce clean high quality milk
- NMR sample box collection and transportation to a central collection point improves carbon footprint and keeps transport costs down for mutual benefit.
- Panniers are not too expensive and provide a space for safe sample transport. Can be retro fitted or included in new build specification.



Acknowledgements



Thank you to Cliff Sayers and John Whitelaw from Nivens for their help in exploring options for transport of milk recording samples

