

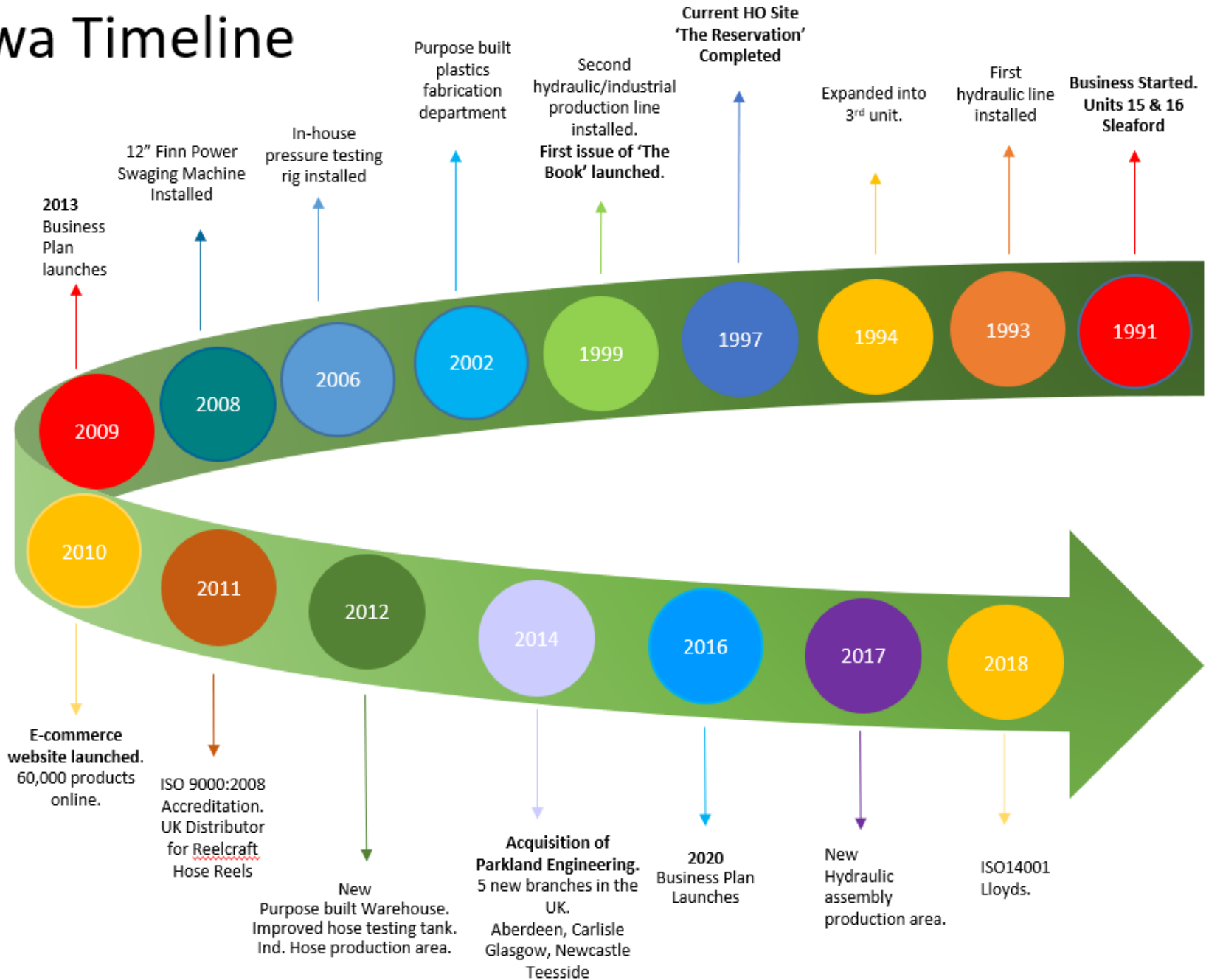
**Specialist Hose Suppliers  
to the Dairy Transportation  
Market**



## Agenda

- Who are KIOWA Ltd?
- Trelleborg Citerdial & Lactadial
- Kiowa Added Value
- Dairy Process / Transport Solutions

# Kiowa Timeline








# Professional Support System

We provide the following as part of our support system:

- Teams of Regional Sales Engineers and 3 National Sales Managers operating throughout our network of 6 branches.
- Internal Sales (our Technical Team) available 8am-5pm Monday – Friday at all branches.
- 24/7 ordering at [www.kiowa.co.uk](http://www.kiowa.co.uk)
- Highly skilled warehouse teams
- Plastic Fabrication Department
- Customer specific packing, labelling and line side delivery where needed.



**Kiowa**  
Industrial Hose | Hose Assemblies | Fluid Power | Site Services

ORDER FROM YOUR NEAREST KIOWA BRANCH

**Sleaford (Head Office)**  
T: 01529 416200  
F: 01529 415552  
E: [sales@kiowa.co.uk](mailto:sales@kiowa.co.uk)

**Aberdeen**  
T: 01224 890339  
F: 01224 873607  
E: [aberdeensales@kiowa.co.uk](mailto:aberdeensales@kiowa.co.uk)

**Carlisle**  
T: 01228 530010  
F: 01228 818087  
E: [carlisesales@kiowa.co.uk](mailto:carlisesales@kiowa.co.uk)

**Glasgow**  
T: 0141 7746200  
F: 0141 7740034  
E: [glasgowsales@kiowa.co.uk](mailto:glasgowsales@kiowa.co.uk)

**Newcastle**  
T: 0191 2709730  
F: 0191 2709740  
E: [newcastlesales@kiowa.co.uk](mailto:newcastlesales@kiowa.co.uk)

**Teesside**  
T: 01642 762266  
F: 01642 762288  
E: [teessidesales@kiowa.co.uk](mailto:teessidesales@kiowa.co.uk)

Next day priority delivery for orders placed before 4.00pm  
Please state priority service required when ordering.

[www.kiowa.co.uk](http://www.kiowa.co.uk)

The image shows a map of the United Kingdom with six locations marked: Aberdeen, Glasgow, Carlisle, Newcastle, Teesside, and Sleaford. Each location is accompanied by a small circular logo featuring a stylized bird or animal head. The background of the map area is a collage of industrial images, including hoses, machinery, and workers in a factory setting.

# Products and Services

Our core products range includes:

- Industrial Hose & Hose Assemblies.
- Couplings.
- Hose Reels.
- Hydraulics.
- Pneumatics.
- Plastic Fabrication.



The services we offer include:

- Hose Swaging up to 10" bore.
- Certify and test Hose Assemblies prior to delivery.
- Shipment of ready to use fully fitted Hose Reel's.
- Plastic Fabrication in all shapes and sizes.
- On site hose surveys and testing - Hose Management Programme.



# Trelleborg Rubber Hoses

- Trelleborg and Kiowa been working together for 20 years.
- European manufactured product so manufactured with weight and health and safety in mind.
- Meets all EU legislation and FDA Compliant, all certificates are available for auditing purposes.
- Seamless tube on all food hoses.
- Trelleborg braid reinforcement allows hose to reach higher working pressures but lighter than American and Italian Hoses and much more flexible than PVC hose.
- **“Phthalate Free” unlike Plastic/PVC hoses used for farm collection.**
- **ADI free**



# Citerdial & Lactadial – Designed for Farm Collection



## Citerdial & Lactadial

- Both products specifically designed for farm collection.
- Citerdial original hose from Trelleborg designed with steel helix, very flexible and better on reel applications.
- **Lactadial 25% lighter than Citerdial** – Plastic helix instead of steel helix. (Crush recoverable).
- Both hoses extremely flexible in hot or cold conditions and suitable for raw milk and CIP transfer.
- Higher price than PVC hoses but offers longevity therefore cost savings over longer period.



# Kiowa Added Value



## Citerdial & Lactadial

- Kiowa cut, fit, assemble and pressure test hoses in house at our Sleaford Branch.
- We dot pin mark ferrules for asset tracking.
- We can supply pressure test certifications printed from our test rig.

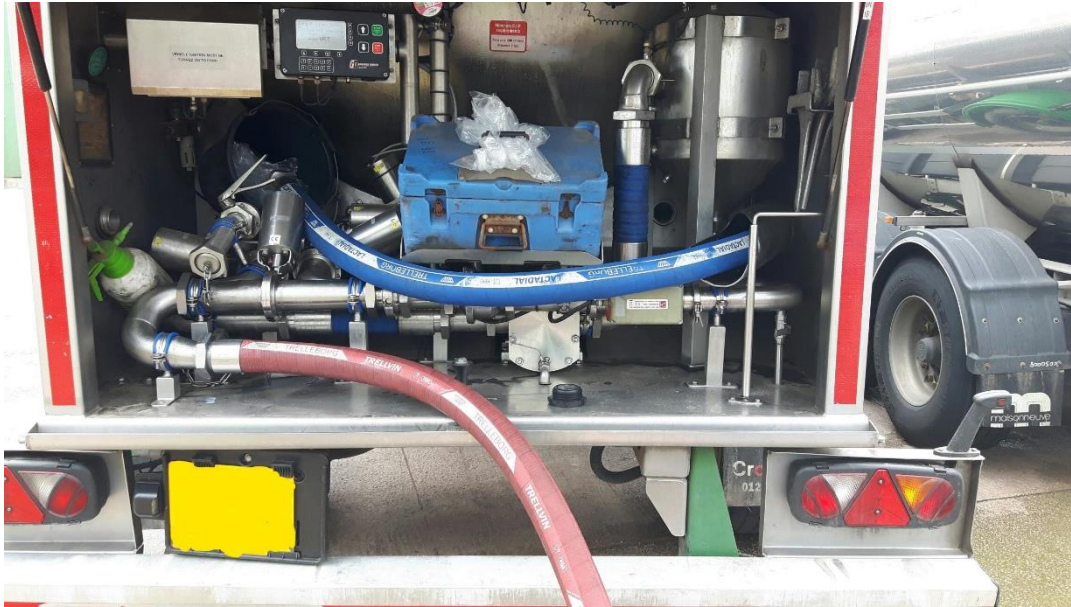
Options we sell to the Dairy Transport Market

- Option 1 - Hygienic Swage Option.
- Option 2 - Reusable coupling.

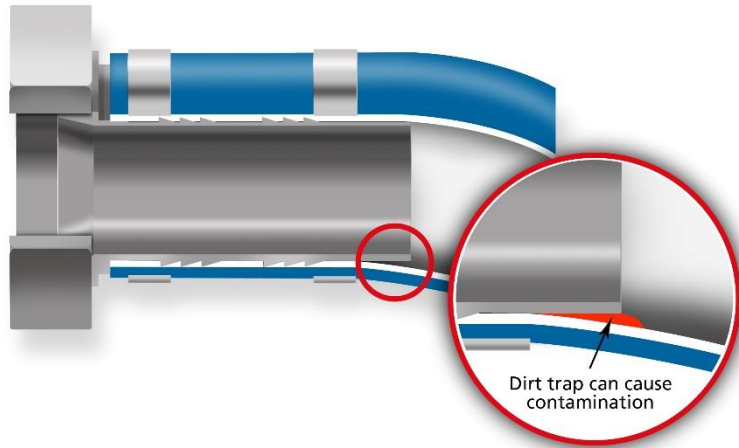


# Kiowa Added Value

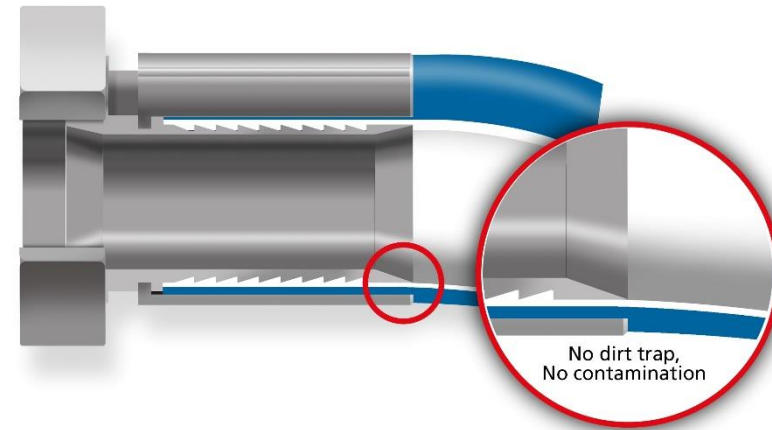
Yellow Helix-guard added to help hoses from kinking - fitted 1m in length on the tanker connection end.



# Kiowa Do Not Recommended Banding



- Clamped hose couplings create a retention area between the hose and the coupling during flexing or pressure surges.
- This allows for the growth of bacteria, therefore causing increased bug counts.



- Swaged couplings eliminate the gap between the coupling and the hose, ensuring the cleanliness of the assembly.
- **No gaps = No bacteria**

# Dairy Process / Transport Solutions

## Breakaway Couplings

- Breakaway Coupling available in 2", 2½" and 3" with RJT, SMS, DIN and Tri-clamp.
- In the event of a tanker pulling away the bolts will shear protecting the process pipework and tanker from damage.

**"Low cost solution in comparison with potential damage to pipework"**





# Dairy Process / Transport Solutions

## RS SGA Loading Arms

- Longer Hose life – extends the life of your hose by keeping it off the floor, the hose is not being dragged around and no kinking.
- Health & Safety - No manual handling, personnel not lifting the hose; it's possible to move with one finger.
- Increased safety – due to hose not being left on the floor, no trip hazard.
- Reduce costs – less down time.





**Thank you for listening  
and any questions**

**Kiowa**  
Industrial Hose | Hose Assemblies | Fluid Power | Site Services

